

Our 50<sup>th</sup> Year 1965–2015

# KITCHEN + BATH IDEAS

## Before & After

Makeovers You Have  
To See to Believe!

30 Most  
Innovative  
Products

p. 51

Small-Space Solutions  
(That Really Work) p. 38

What to Know Before Hiring a Pro p. 36

**THIS PHOTO:** The vanity counter's 5-inch thickness is a bit of sleight of hand that helps to visually lower the nearly 12-foot ceiling and cozy up the space. **OPPOSITE:** Devoid of extraneous detail, a frameless mirror seems to float over the vanity, complementing the streamlined silhouette of polished-chrome plumbing fixtures.





# naturally speaking

HONEST MATERIALS ESTABLISH AN EARTHY, ORGANIC VIBE IN THIS STYLISH SEATTLE-AREA RETREAT.

*writer* MARA BOO *photographer* JOHN GRANEN *field editor* LINDA HUMPHREY



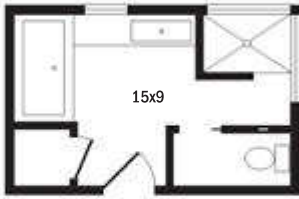
## bright idea

Cut back on scrubbing with a doorless walk-in shower. The lack of glass eases maintenance.



### DOORLESS SHOWER DESIGNS

Say good-bye to curtains and glass doors. An open shower makes a statement, and this gallery shows you how to pull it off. [BHG.com/Doorless](http://BHG.com/Doorless)



# W

ith three rough-and-tumble boys under the age of 6, Nicole Bavo and Kyle Meidell put an adults-only master bath at the top of their must-have list for

their new home in Bainbridge Island, Washington. “The house we moved from had a single, small bathroom,” Nicole says. “Let’s just say it was very tight.”

Greater square footage wasn’t their only goal—they also craved a cozy feel. To satisfy those twin objectives, architects Devin Johnson and Mike Rausch conceived a floor plan that dedicates zones to bathing, showering, and sink-oriented activities, and includes an enclosed commode. Then they worked with the couple to devise a restful color palette of blues, grays, and greens—lightened ever so slightly by white—to unify the space. “Nicole and Kyle weren’t afraid of color, which really helped create the warm, intimate feeling they were after,” Rausch says.

Infusing subtle excitement is a carefully limited mix of materials, each honoring the color scheme as it contributes its own unique texture. Glass tiles in several soothing hues shimmer as they climb shower walls and surround the tub. Hand-poured concrete—at once sleek yet organic—lines the floor, composes the extra-thick countertop, and forms an integrated trough-style sink. Meanwhile, the ridged-veneer vanity ripples in contrast, a surprising counterpoint to the room’s smoother elements.

Just as surprising is Nicole’s love for the walk-in shower—now the entire family’s favorite feature. “It’s turned out to be a wonderful place to bathe the boys. I can march them all in, let them splash and play, hose them off, and never even get wet. It’s not at all what I had planned, but a definite bonus!” Surprising, indeed. **KBI**

RESOURCES BEGIN ON PAGE 138.

**OPPOSITE:** A towel heater marks the entrance to the walk-in shower, letting homeowners Nicole Bavo and Kyle Meidell grab a warm towel without stepping foot out of the shower. **ABOVE RIGHT:** Unable to find sheets of glass tiles in exactly the color mix she wanted, Nicole painstakingly cut individual tiles out of single-tone sheets to create her own mosaic, set subway-tile-style. “It took about eight hours and more than a few X-Acto knife blades,” she says. **RIGHT:** Because Nicole is 5 feet tall while Kyle is more than 6 feet, an adjustable-height showerhead was a must.





### 130-133 NATURALLY SPEAKING

**Architects**—Devin Johnson, Michael Rausch, Johnson Squared; 206/842-9993; [johnsonssquared.com](http://johnsonssquared.com). **Tub** Andrea—MTI; 800/783-8827; [mtibaths.com](http://mtibaths.com). **Faucets: tub** Atrio Roman, **sink** Atrio widespread with lever handles—Grohe America, Inc.; 800/201-3407; [groheamerica.com](http://groheamerica.com). **Cabinetry** thermo structured surface TSS Collection Macassar, a textured Macassar Ebony veneer—SALT International Corp.; 305/698-8889; [saltintl.com](http://saltintl.com). **Countertops** custom concrete with dual faucet integral sink, **tub surround** custom concrete—Ryan McPhail, Fluid Concrete and Design Studio; 206/818-2996. **Lighting: pendants** Borrego in Smoke, **overhead** Caspian Grande in Smoke—Tech Lighting, Inc.; 800/522-5315; [techlighting.com](http://techlighting.com). **Tile: shower walls, tub surround, walls** Moda Vetro glass mosaic in es01, es13, and es19, **shower floor** honed bluestone—Pental Granite & Marble; 503/445-8600; [pentalonline.com](http://pentalonline.com). **Flooring** poured concrete—check with local suppliers. **Towel warmer** Jeeves Model D—Amba Products; 404/350-9738; [ambaproducts.com](http://ambaproducts.com). **Scroll on wall** Chinese—Glenn Richards; 206/287-1877; [glennrichards.com](http://glennrichards.com).



### 134-137 DESERT OASIS

**Architect**—Ron Robinette, AIA, Robinette Architects, Inc., LEED, USGBC; 520/323-3979; [robinettearchitect.com](http://robinettearchitect.com). **Builder**—Joe McHallam, The McHallam Company, LLC; 520/797-9988; [themchallamco.com](http://themchallamco.com). **Tub**—BainUltra; 800/463-2187; [bainultra.com](http://bainultra.com). **Tub filler**—Sigma Faucet; 800/621-8383; [sigmafaucet.com](http://sigmafaucet.com). **Sinks**—Kohler Co.; 800/456-4537; [us.kohler.com](http://us.kohler.com). **Faucets**—Dornbracht USA, Inc.; 800/774-1181; [dornbracht.com](http://dornbracht.com). **Vanities**—Crown Point Cabinetry; 800/999-4994; [crown-point.com](http://crown-point.com). **Countertops** Noir St. Laurent, **floor and shower tile** Parchment limestone—The McHallam Company; 520/797-9988; [themchallamco.com](http://themchallamco.com). **Lighting: sconces, his vanity**—Ralph Lauren Home; 888/475-7674; [ralphlaurenhome.com](http://ralphlaurenhome.com), and **sconces, her vanity**—Porta Romana; 786/464-0992; [portaromana.co.uk](http://portaromana.co.uk), and **ceiling fixture**—Vaughan Lighting; 212/319-7070; [vaughandesigns.com](http://vaughandesigns.com). **Mirror: her vanity**—Séura; 920/857-9069; [seura.com](http://seura.com), and **his vanity, rug**—homeowners' collection. **Urn beside tub** silver—Paula Wertman Classic Design; 520/299-0032. **Vases by tub and vanities, jewelry box**—West Elm; 866/428-6468; [westelm.com](http://westelm.com) (product line varies). **Brown urn, silver tray, round soap dishes, towels**—Crate & Barrel; 800/967-6696; [crateandbarrel.com](http://crateandbarrel.com) (product line varies). **Candle**—Anthropologie; 800/309-2500; [anthropologie.com](http://anthropologie.com). **Shaving props**—The Art of Shaving; 800/493-2212; [theartofshaving.com](http://theartofshaving.com).